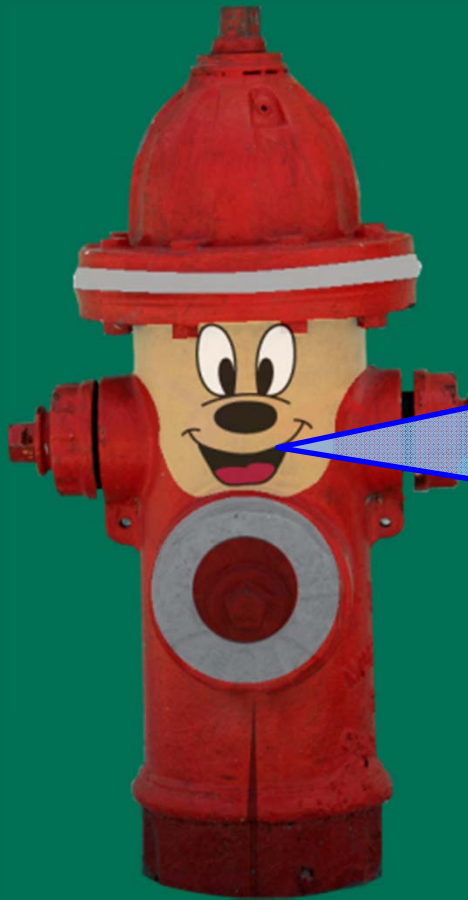


What Are The Components Of A Town Centre Street?



Streets are quite literally a sum of their parts.

The following slides discuss the importance of each part. Please note that the Town Centre Standards continue to evolve as we learn more about how to make the most of the public realm.

Although helpful in explaining the different components, these examples were built early in the process and differ in some ways from the current standards.

Walking & setback zones

Some of this space is sidewalk, and some is for businesses (retail displays or seating). The sidewalk joints are smoother than a traditional design, making them better for wheelchairs and strollers.

Sidewalk

The sidewalk is wider than usual, and benefits from pedestrian-oriented lighting.

Mini-plaza at intersection



Intersection corners provide more space for pedestrians. Custom colours or patterns are possible, integrating with the adjoining development.

Custom designs possible

This is another example of custom colours and patterns that reflect the neighbouring development.



Rain garden with railing

Rain gardens contain trees and other landscaping. Those located between the sidewalk and cycle track have decorative metal railings.



Rain garden showing drain

As the rain garden fills with water, excess water flows into this drain which is linked to the storm system (pipes).

Rain garden crossings

Regular crossings allow pedestrians to access cars parked at the curb.

Bike path

A cycle path is typically provided on both sides of the street, for one-way movement in the same direction as traffic. The front boulevard provides separation from car doors.

Bike path at intersection

Cyclists return to street level at intersections.

Front boulevard

The front boulevard is attractive and provides space for lamp posts, parking meters, and more trees.

Rain garden in curb bulge

On two-lane streets, the rain garden is located in the front boulevard, with extra space provided by curb bulges. These help to visually narrow the street.

Vehicular zone

The vehicular zone has the same lane widths and number of lanes as it would have before.

Decorative pavers

Pavers add to the attractiveness of the street. They are placed around rain gardens on wider streets, and between the sidewalk and cycle track on narrower streets.

Attractive lighting

Street lights are not only functional but also add to the attractiveness of the street.

Street furniture

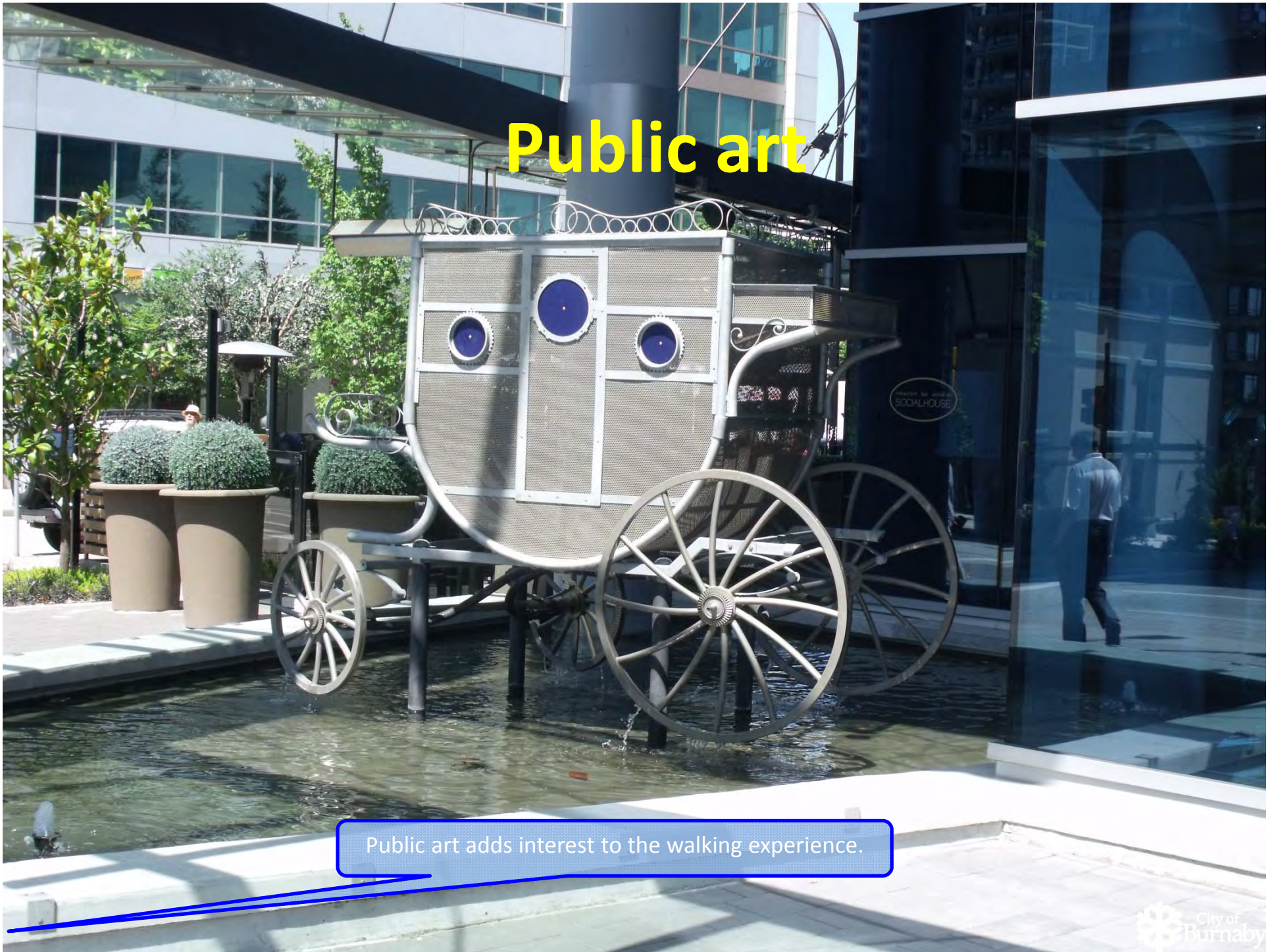


Street furniture is provided at regular intervals. It provides opportunities for socializing, people-watching, or to rest while taking a longer walk.

Functional and artistic

Aside from being functional, street furniture can also add to the visual appeal of the street.

Public art



Public art adds interest to the walking experience.

Public art

It enlivens the street and gives it a unique character.