

Public Notice: Disposition of City Land

Published: December 5, 2024

NOTICE is hereby given pursuant to Section 26 of the *Community Charter* that the City of Burnaby intends to dispose of City land as follows:

Description of Lands: The road dedicated on Plan with Bylaw filed A44067 and part of road dedicated on Plan 1930A, shown as Lots A and B, District Lot 95 Group 1 New Westminster District and outlined in bold on Reference Plan EPP108402, prepared by Mike Bernemann, B.C.L.S., that accompanies Burnaby Highway Closure Bylaw No. 1, 2022.

(See attached Plan EPP108402)

Purchaser: Trofeo Investments Ltd. (Incorporation No. BC1367201)
Greenford Investments (A) Ltd. (Incorporation No. BC1367202)
Greenford Investments (B) Ltd. (Incorporation No. BC1367205)

Nature of Disposition: Fee simple transfer

Consideration: Lot A: \$5,247,406.25
Lot B: \$26,027.13

REFERENCE PLAN TO ACCOMPANY
CITY OF BURNABY BYLAW NO 14425
TO CLOSE ROAD DEDICATED ON
PLAN WITH BYLAW FILED A44067 AND
PART OF ROAD DEDICATED ON PLAN 1930A
ALL OF BLOCK 22 DISTRICT LOT 95 GROUP 1
NEW WESTMINSTER DISTRICT

Pursuant to Section 120 of the Land Title Act and
Section 40 of the Community Charter
BCGS 92G.026

The intended plot size of this plan is 888 mm in width by 560 mm in height
(0.502) when plotted at a scale of 1:500

This Plan Lies Within Integrated Survey Area No. 25, Burnaby, NAD83 (CSRS), 4.0.D.B.C.1.MWRD

Grid bearings are derived from observations between
geodetic control monuments 8713277 and 9411716 and
are referred to the central meridian of UTM Zone 10K.

The UTM coordinates and estimated absolute accuracy achieved
are derived from the MASCOIT published coordinates and standard deviations
for geodetic control monuments 8713277 and 9411716.

This plan shows horizontal ground-level distances unless otherwise specified.
To compute grid distances, multiply ground-level distances by the average
combined factor of 0.9995830. The average combined factor has been determined
based on geodetic control monument 8713277.

LEGEND:

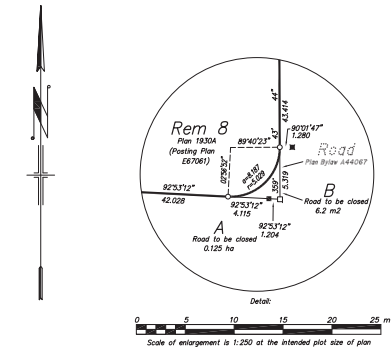
All Distances Are in Metres And Decimals Thereof

- ⊙ Control Monument Found
- Standard Iron Post Found
- Lead Plug Found
- Standard Iron Post Set
- Lead Plug Set
- ⊕ Denotes Unmonumented Point
- ⊕ Denotes Post
- UO Denotes Unknown Origin

Notes:
(1) Previously tied Lead Plug, now lost

Datum: NAD83 (CSRS) 4.0.D.B.C.1.MWRD UTM Zone 10
UTM Northing: 5451935.384
UTM Easting: 502848.097
Point combined factor: 0.9995830
Estimated absolute accuracy: +/-0.011 m

Datum: NAD83 (CSRS) 4.0.D.B.C.1.MWRD UTM Zone 10
UTM Northing: 5451935.384
UTM Easting: 502848.097
Point combined factor: 0.9995830
Estimated absolute accuracy: +/-0.011 m



This plan lies within the jurisdiction of the
Approving Officer for the City of Burnaby

This plan lies within the Metro
Vancouver Regional District.

The field survey represented by this plan was
completed on the 18th day of November, 2021
Mike Benemann, BCLS 793

Inspected under the Land Title Act on the
25th day of September, 2024