

Public Notice: Disposition of City Land

Published: February 6, 2025

NOTICE is hereby given pursuant to Section 26 of the *Community Charter* that the City of Burnaby intends to dispose of City land as follows:

Description of Lands: The part of road dedicated on Plan 2775 District Lot 97, Group 1, New Westminster District containing 16.6 m² shown outlined in bold and identified as Parcel 1 on Reference Plan EPP133555.

(See attached Plan EPP133555, on page 2)

Purchaser: BDC (MacPherson) Holdings Ltd. (Inc. No. BC1333814), as the registered owner
BDC (MacPherson) Property Limited Partnership (LP0864348), as the beneficial owner

Nature of Disposition: Fee simple transfer

Consideration: \$58,964.64

REFERENCE PLAN TO ACCOMPANY BYLAW No. 14621, BURNABY HIGHWAY CLOSURE BYLAW No. 6, 2023
TO REMOVE THE ROAD DEDICATION ON PART OF ROAD DEDICATED ON PLAN 2775 DISTRICT LOT 97
GROUP 1 NEW WESTMINSTER DISTRICT

PURSUANT TO SECTION 120 OF THE LAND TITLE ACT
AND SECTION 40 OF THE COMMUNITY CHARTER

BCGS 92G.026



SCALE 1 : 500 DISTANCES ARE IN METRES

THE INTENDED PLOT SCALE OF THIS PLAN IS
864 mm IN WIDTH BY 560 mm IN HEIGHT (D SIZE)
WHEN PLOTTED AT A SCALE OF 1:500.

INTEGRATED SURVEY AREA No. 25, BURNABY
NAD83(CSRS) 4.0.0.BC.1.MVRD

GRID BEARINGS ARE DERIVED FROM OBSERVATIONS BETWEEN
GEODETIC CONTROL MONUMENTS 87H3317 AND 87H3230 AND ARE
REFERRED TO CENTRAL MERIDIAN OF UTM ZONE 18

THE UTM COORDINATES AND ESTIMATED HORIZONTAL POSITIONAL
ACCURACY ACHIEVED HAVE BEEN DERIVED FROM THE MASCOOT
PUBLISHED COORDINATES FOR GEODETIC CONTROL MONUMENTS
87H3317 AND 87H3230.

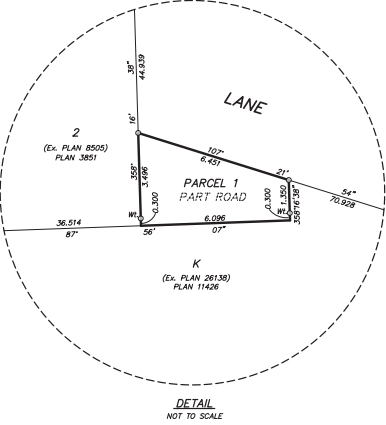
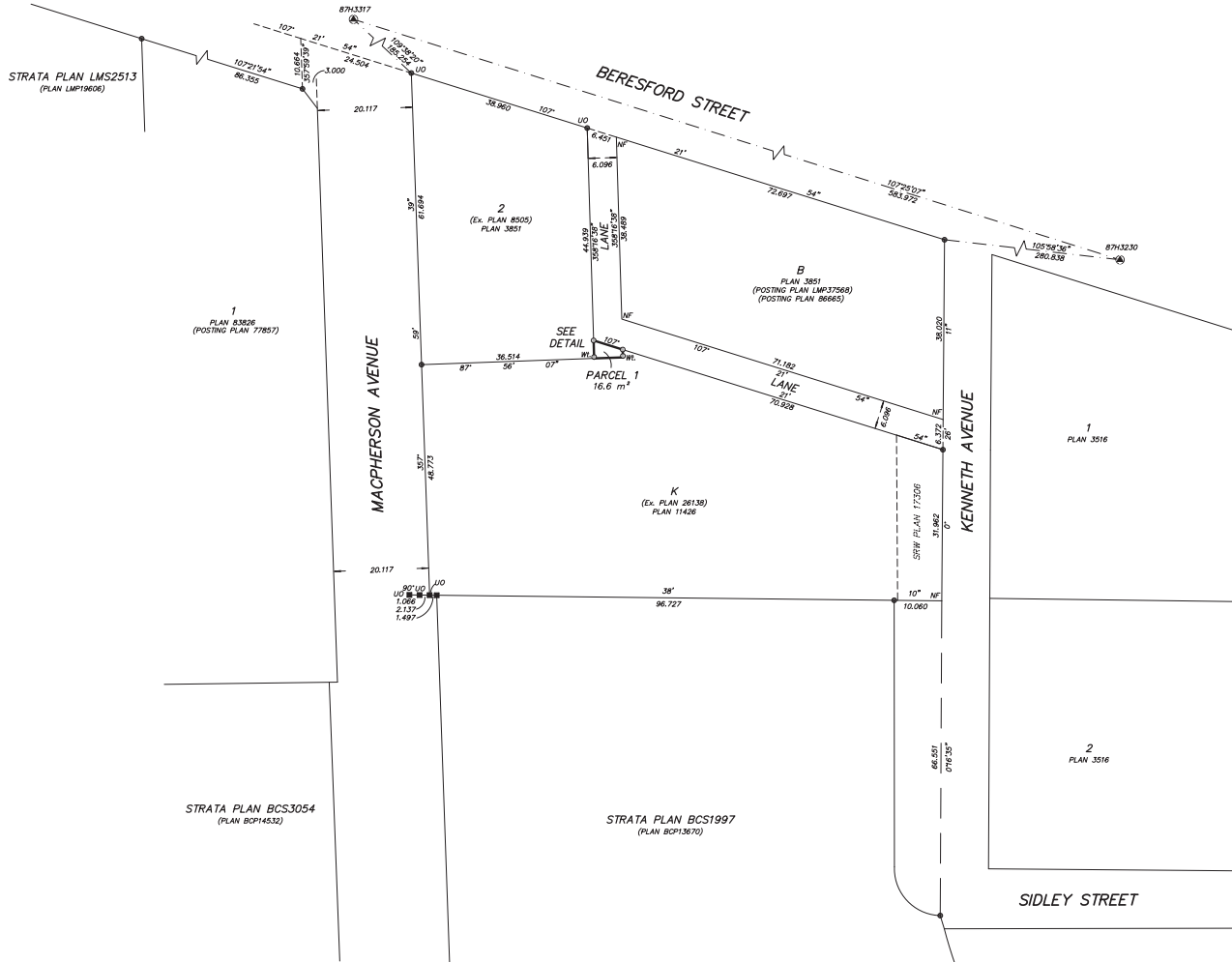
THIS PLAN SHOWS HORIZONTAL GROUND-LEVEL DISTANCES, UNLESS
OTHERWISE SPECIFIED, TO COMPUTE GRID DISTANCES. MULTIPLE
GROUND-LEVEL DISTANCES BY THE AVERAGE COMBINED FACTOR OF
0.999857 WHICH HAS BEEN DERIVED FROM GEODETIC CONTROL
MONUMENTS 87H3317 AND 87H3230.

LEGEND

- DENOTES CONTROL MONUMENT
- DENOTES STANDARD IRON POST
- DENOTES LEAD PLUG
- DENOTES NOT FOUND
- NF DENOTES NOT FOUND
- UO DENOTES UNKNOWN ORIGIN
- W DENOTES WITNESS
- m² DENOTES SQUARE METRES
- Ex. DENOTES EXPLANATORY

NOTE:
THIS PLAN SHOWS ONE OR MORE WITNESS POSTS WHICH ARE NOT
SET ON THE TRUE CORNER(S).

TABLET MARKING	NORTHING	EASTING	ABSOLUTE ACCURACY
87H3317	5451829.455 m	501080.248 m	0.01 m
87H3230	5451654.714 m	501637.214 m	0.01 m



THE FIELD SURVEY REPRESENTED BY THIS PLAN WAS
COMPLETED ON THE 31st DAY OF OCTOBER, 2023
JESSE MORIN, BOLS (880)
EDRF: 276324

THIS PLAN LIES WITHIN THE METRO VANCOUVER REGIONAL DISTRICT