

PUBLIC NOTICE: DISPOSITION OF CITY LAND

Published: Date April 17, 2025

NOTICE is hereby given pursuant to Section 26 of the *Community* Charter that the City of Burnaby intends to dispose of City land as follows:

Description of Lands:	All those portions of road in District Lot 125, Group 1, New Westminster District dedicated by Plan 33521, identified as Parcel “A” and Parcel “B”, and containing 218.7 m ² and 1000.9 m ² , respectively, shown outlined in bold on Reference Plan EPP142325 See attached Plan EPP142325 on page 2
Purchaser:	VIAM HOLDINGS LTD. (Inc. No. BC0267254), as to the legal interest in the Lands, and LMLTD HOLDINGS CORP. (Inc. No. BC1483376), as to the beneficial interest in the Lands
Nature of Disposition:	Fee Simple
Purchase Price:	\$1,961,268.69



REFERENCE PLAN TO ACCOMPANY CITY OF BURNABY BYLAW No.14714
TO CLOSE PARTS OF ROAD DEDICATED ON PLAN 33521 DISTRICT LOT 125
GROUP 1 NEW WESTMINSTER DISTRICT

PURSUANT TO SECTION 120 OF THE LAND TITLE ACT AND SECTION 40 OF
THE COMMUNITY CHARTER

BCGS 92G.026



ALL HORIZONTAL GROUND-LEVEL DISTANCES ARE IN METRES
THE INTENDED PLOT SIZE OF THIS PLAN IS
854mm IN WIDTH BY 560mm IN HEIGHT (D-SIZE)
WHEN PLOTTED AT A SCALE OF 1:400.

THIS PLAN LIES WITHIN INTEGRATED SURVEY AREA NO. 25, CITY OF
BURNABY, NA083(CRS) 4.0.0.BC.1.MVRD.

GRID BEARINGS ARE DERIVED FROM OBSERVATIONS BETWEEN GEODETIC
CONTROL MONUMENTS 77H6828 AND 78H7597 ARE REFERRED TO THE
CENTRAL MERIDIAN OF UTM ZONE 10 (123° WEST LONGITUDE).

THIS PLAN SHOWS HORIZONTAL GROUND-LEVEL DISTANCES UNLESS
OTHERWISE SPECIFIED. TO COMPUTE GRID DISTANCES, MULTIPLY
GROUND-LEVEL DISTANCES BY THE AVERAGE COMBINED FACTOR OF
0.99998365 WHICH HAS BEEN DERIVED FROM GEODETIC CONTROL
MONUMENTS 77H6828 AND 78H7597.

THE UTM COORDINATES AND ESTIMATED ABSOLUTE ACCURACY ACHIEVED
ARE DERIVED FROM THE MASCOOT PUBLISHED COORDINATES AND STANDARD
DEVIATIONS FOR GEODETIC CONTROL MONUMENTS 77H6828 AND 78H 7597.

TABLET MARKING	NORTHING	EASTING	ESTIMATED ABSOLUTE ACCURACY
77H6828	5451548.745	500878.876	0.011
78H7597	5457818.906	700872.706	0.011



LEGEND

- INDICATES CONTROL MONUMENT FOUND
- INDICATES STANDARD IRON POST FOUND
- INDICATES STANDARD IRON POST PLACED
- INDICATES LEAD PLUG FOUND
- +
- INDICATES UNMOUNTED POINT
- NF INDICATES NOTHING FOUND
- NH INDICATES NOTHING
- WTS INDICATES NOT TO SCALE
- UA INDICATES UNDER ASPHALT
- (N) INDICATES RADIAL BEARING

THIS PLAN SHOWS ONE OR MORE WITNESS POSTS
OR PLUGS WHICH ARE NOT SET ON THE TRUE
CORNERS.

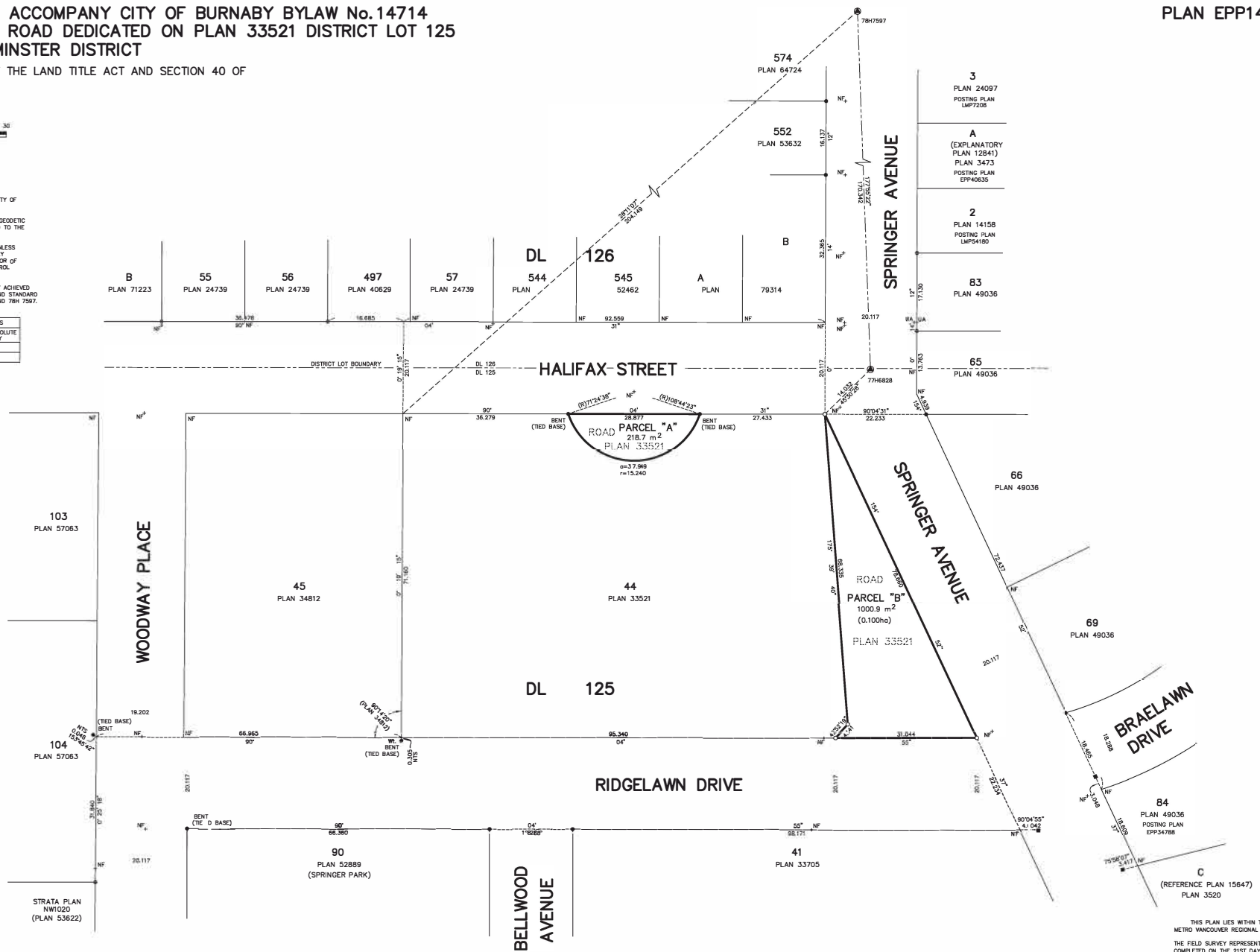
OFFSET AND WITNESS POSTS OR PLUGS ARE SET
ON PRODUCTION OF PROPERTY LINES UNLESS
INDICATED OTHERWISE.

MATSON PECK & TOPLISS
SURVEYORS & ENGINEERS
#320 - 11120 HORSeshOE WAY
RICHMOND, B.C. V7A 5H7
PH: 604-270-9331
FAX: 604-270-4137

CADFILE: 20158-025-REF-000.DWG

B-24-20158-5-REF-0

PLAN EPP142325



THIS PLAN LIES WITHIN THE
METRO VANCOUVER REGIONAL DISTRICT
THE FIELD SURVEY REPRESENTED BY THIS PLAN WAS
COMPLETED ON THE 21ST DAY OF NOVEMBER, 2024.
SEBASTIANO LOCONTE, BCLS 945